

Professional manufacturer of welding machines



Robot/Laser/Automation/Welder



LONGRUN®



www.worldwel.com



Welder manufacturing company
The perfect technology worldwel

Greeting

Information

History

Organization

Vision

Business areas

Certificates

Major domestic customers

Major exporting countries

Production process and equipment

We maintain continuous development through quality management through active development of new technologies and process improvement, and stable human resources.

So, it was recognized as ISO9001, patent, technology innovative small and medium-sized enterprises (INNO-BIZ), and promising small and medium-sized enterprises for export.

We will strive to become a global company by maximizing customer satisfaction with products of durability and performance that meet the brand “LONGRUN”.

WORLDWEL CO., LTD.
CEO / SUN, HAK-KYOO

Greeting

To be the Premier Global Leader
WE MAKE THE BEST



INFORMATION

Company name WORLDWEL CO., LTD.

CEO SUN, HAK-KYOO

Establishment 1991

Major products Inverter Arc welding machine
Inverter resistance welding machine
Automation welding system
Automation Robot welding system
Automation Laser welding system

Major customer Samsung Heavy Industries, Hyundai Engineering & Construction, Doosan Heavy Industries, POSCO , Japan, Dubai, Romania, Panama, Vietnam, Taiwan, and more 20 countries.

To be the Premier Global Leader
WE MAKE THE BEST



Address

67, Seounsandan-Ro, 1 Gil, Gyeyang-Ku, Incheon-City, 21072, Korea

Contact

TEL : +82-32-876-2114~6

E-mail

longrun@worldwel.com

Web site

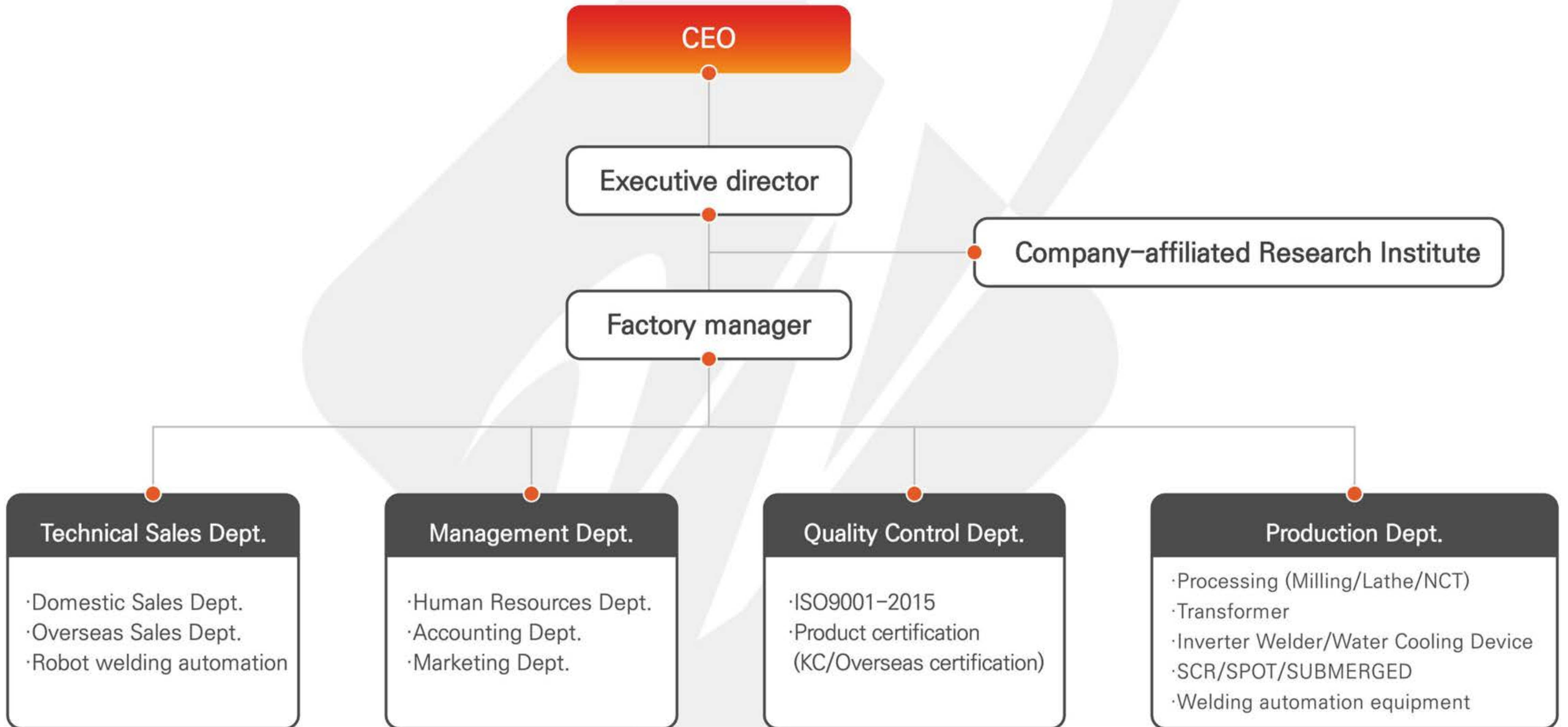
www.worldwel.com

HISTORY

- 1991 · Established JEONGWOO WELDER
- 1995 · Changed Company name to WORLD M&E Co.
- 2007 · Converted into WORLDWEL CO., LTD.
- 2009 · Register a Trademark for the name "LONGRUN"
- 2010 · Gain CE Certificate for Inverter DC Arc Welder
- 2011 · Gain CE Certificate for Inverter TIG Welder (200L2, 350LT, 500LT2)
· Established Knowledge Industry center and new factory (33,000m2)
- 2012 · Established R&D Center
· Authorized Good quality product's Enterprise
· Selected as a Vision Enterprises
- 2013 · Authorized as an FTA expert Exporter
· Established R&D team (Water cooler & Chiller)
· Development of high-quality TIG welding machine
· Gain CE Certificate for 7 units.
- 2014 · Gain the Certificate of Root-Technology Expert Enterprise from SMBA
· Regained ISO 9001, 2000 Certificate
· Gain CU Certificate for TIG, MIG and MMA machines

- 2015 · Given a citation for excellent trading business by SMBA
· Awarded Best Company Commendation
· Gain CU certificate (Russia, Belarus, Kazakhstan)
· Gain Management innovation-type SMEs (MAIN-BIZ)
- 2016 · Development of Inverter submerged welding machine
· Purchase of new factory site (2,300m²)
- 2017 · Completed Smart Factory Support Project
· Gain CE for Inverter submerged welding machine
· Introduction of Production Process Management System
- 2018 · Developed Digital Multi-process welder
· Selected as a high-growth company export capability enhancement project
- 2019 · Moved to the new factory of Seoun General Industrial Complex
· Awarded Minister of SMEs and Startups
- 2020 · Certified as a Material parts equipment specialist
· Selected as a smart factory supply and spread business
- 2021 · Certified as a company specializing in materials, parts, and equipment
· Acquired KC autonomous safety certification
· Industrial robot
· Certified of Visionary Enterprise of Incheon Metropolitan City
· Obtain a partner for Digital Multi process Welder LONGRUN 350PMA.
- 2022 · Recognized as an excellent workplace in risk assessment by Korea Occupational Safety and Health Agency
· Awarded a plaque of appreciation by Incheon Metropolitan City Superintendent of Education
· Expansion of laser cutting machine business and opening of dedicated exhibition hall
· Commendation from Incheon City Mayor (Technological Innovation and Job Creation)
- 2023 · Awarded a plaque of appreciation by the Deputy Prime Minister and Minister of Education and the Minister of Employment and Labor, and re-certified as a venture business.
· Re-certification as a specialized company for materials, parts, and equipment

ORGANIZATION



VISION

•PRODUCT DEVELOPMENT



1. R&D support project
2. Research of Industry-Academic Cooperation

•NURTURING TALENT



1. Work and learning system parallel
2. Training of root technology experts

•INCREASING THE SALES



1. Strengthening promotion of new products
2. Discover new business partners
3. Participating in domestic and overseas exhibitions

•Customer Satisfaction



1. Expansion of quality control across the enterprise
2. Introduction of MES production process management
3. Reflect customer needs

We are doing our best from product development to customer satisfaction in order to achieve the goal of “Technology that is the standard of value”.

BUSINESS AREAS



Welding machine

- Laser welding machine
- Inverter welding machine
- Inverter resistance welding machine
- Stud welding machine
- Plasma welding machine



Welding Robot

- Inverter welding machine
- Inverter resistance welding machine
- Stud welding machine
- Plasma cutting machine



Welding automation

- Steel Structure Automatic Welding system
- Pipe automatic welding system
- Submerged automatic welding system
- CO2 automatic welding system
- TIG automatic welding system



Welding peripheral device

- Welding water cooling device
- Plasma console
- Turntable
- Auto Carriage
- Metal Cleaner

CERTIFICATES

Through continuous technology development and quality management, it has acquired international certifications such as ISO9001, CE, and CU, and also has domestic certifications such as root technology company and INNO-BIZ.



CE Certificate



Root-Technology Expert Enterprise from SMBA



ISO 9001



INNO-BIZ



CE - 350LC2



CE - 500LC, 600LC



Certificate of Trademark registration



Visionary enterprise



Certificate of Patent



Export-promising SMEs



Excellent design selection



CU certificate

MAJOR DOMESTIC CUSTOMERS



POSCO

DSME
대우조선해양

DSC
대우조선해양건설(주)

DOOSAN

Doosan Heavy Industries & Construction

SAMSUNG

SAMSUNG HEAVY INDUSTRIES

SAMSUNG

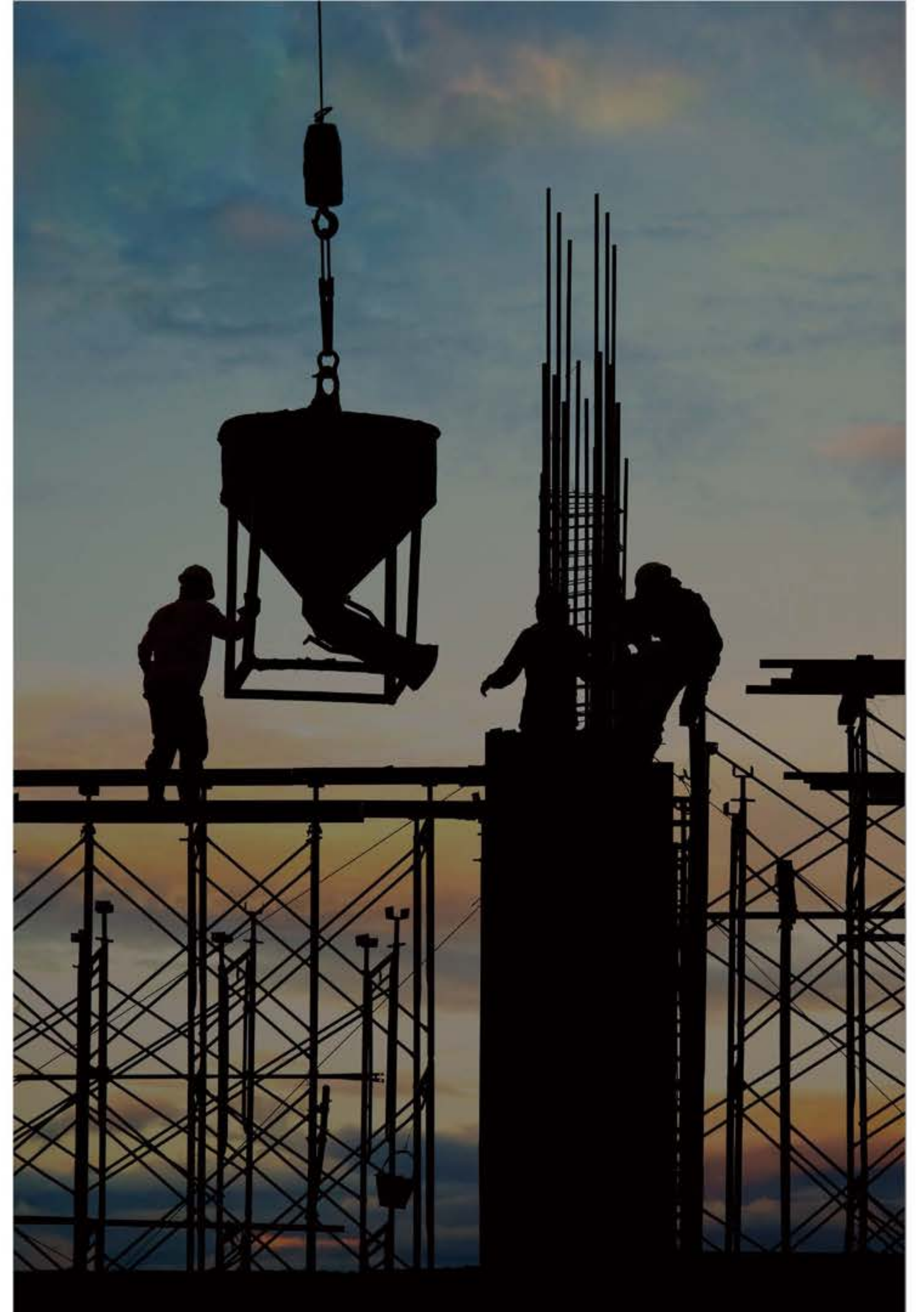
SAMSUNG C&T



HANJIN HEAVY INDUSTRIES & CONSTRUCTION GROUP



HYUNDAI
ENGINEERING CO., LTD.



MAJOR EXPORTING COUNTRIES

WORLDWEL exports to over 20 countries including Asia, Europe, and the Americas

Australia, Japan, Poland, Thailand, Indonesia, Russia, Egypt, Vietnam, Taiwan, Mexico, Romania, India, Panama, UAE, Iran, etc.



Australia



JAPAN



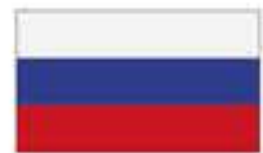
POLAND



THAILAND



INDONESIA



RUSSIA



EGYPT



VIETNAM



TAIWAN



MEXICO



ROMANIA



INDIA



PANAMA

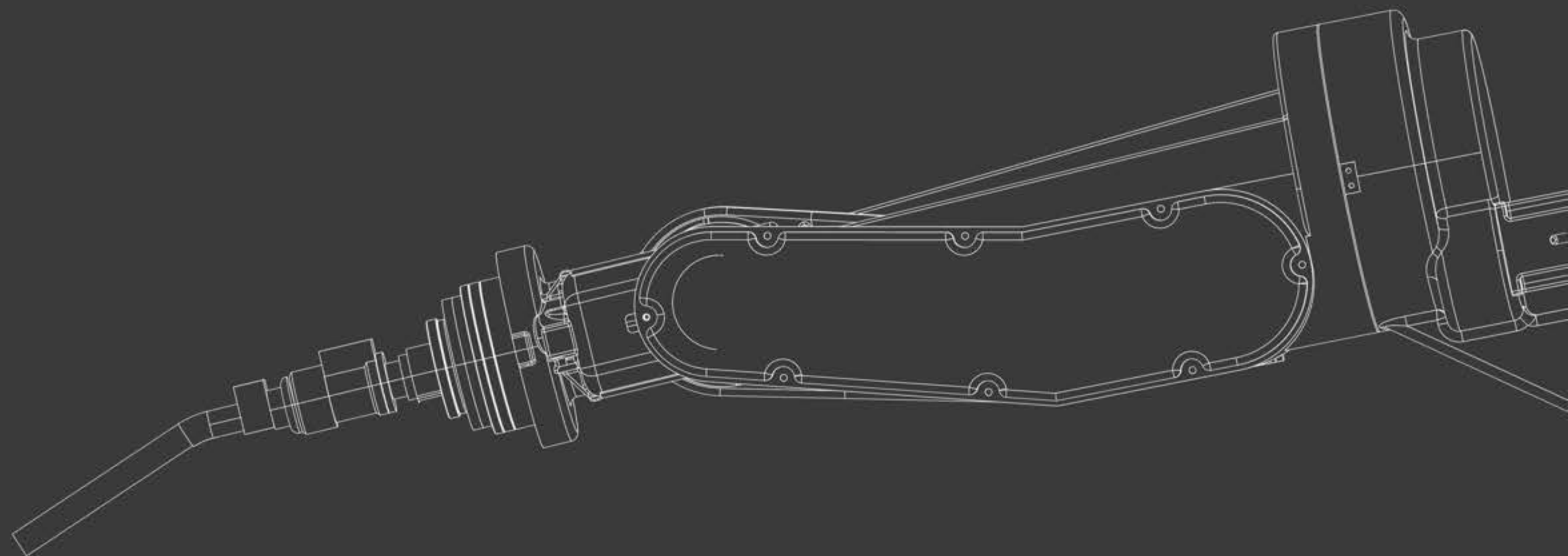


UNITED ARAB EMIR



IRAN





Production process and equipment

• NCT Processing



• Bending



Processing
Bending

- Transformer fabrication

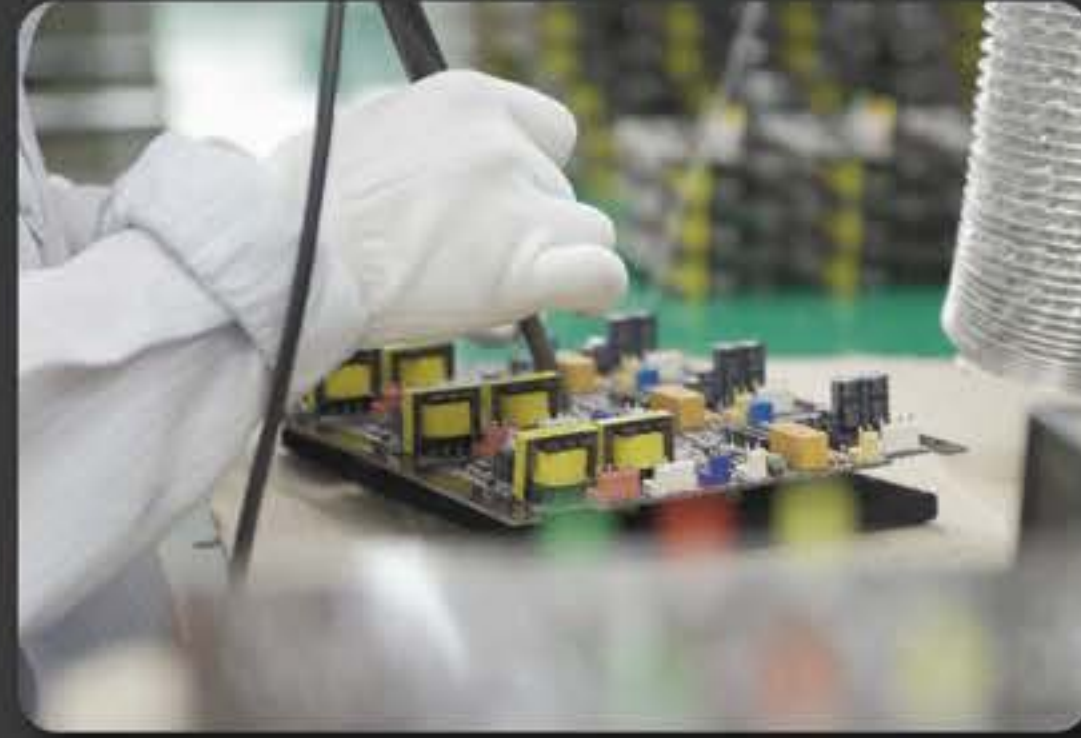


- Silk Printing

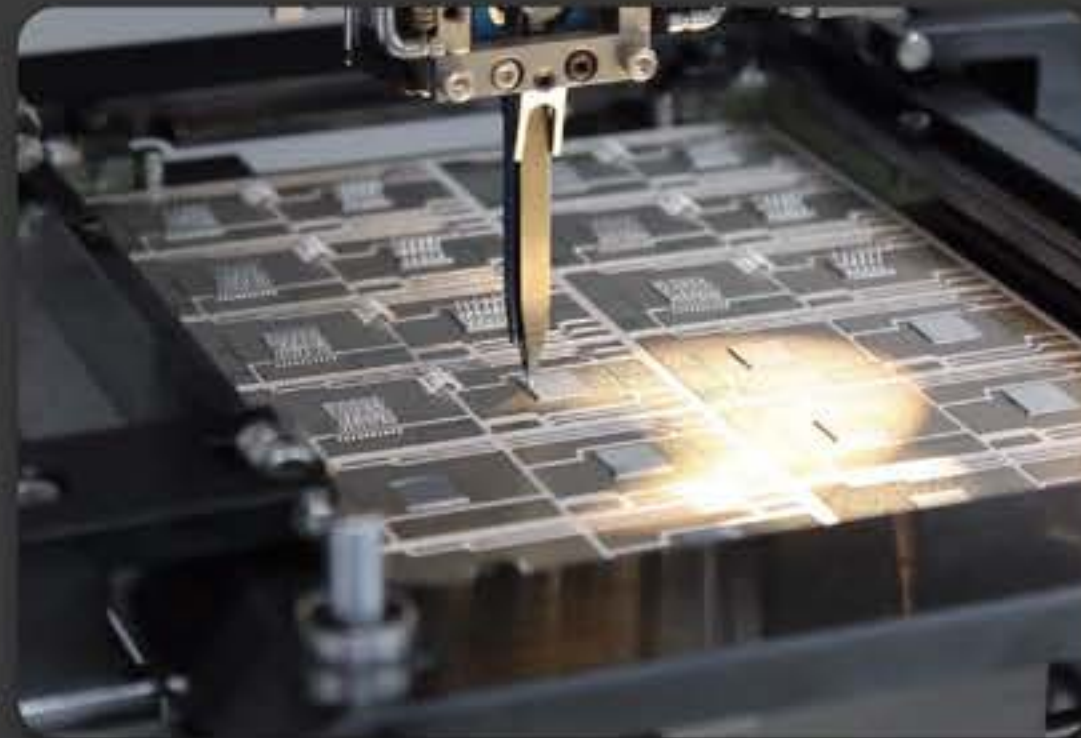


Transformer
Silk Printing

- PCB fabrication



- Semiconductor device fabrication



PCB
Semiconductor

- Inverter 1 team production line



DC Arc

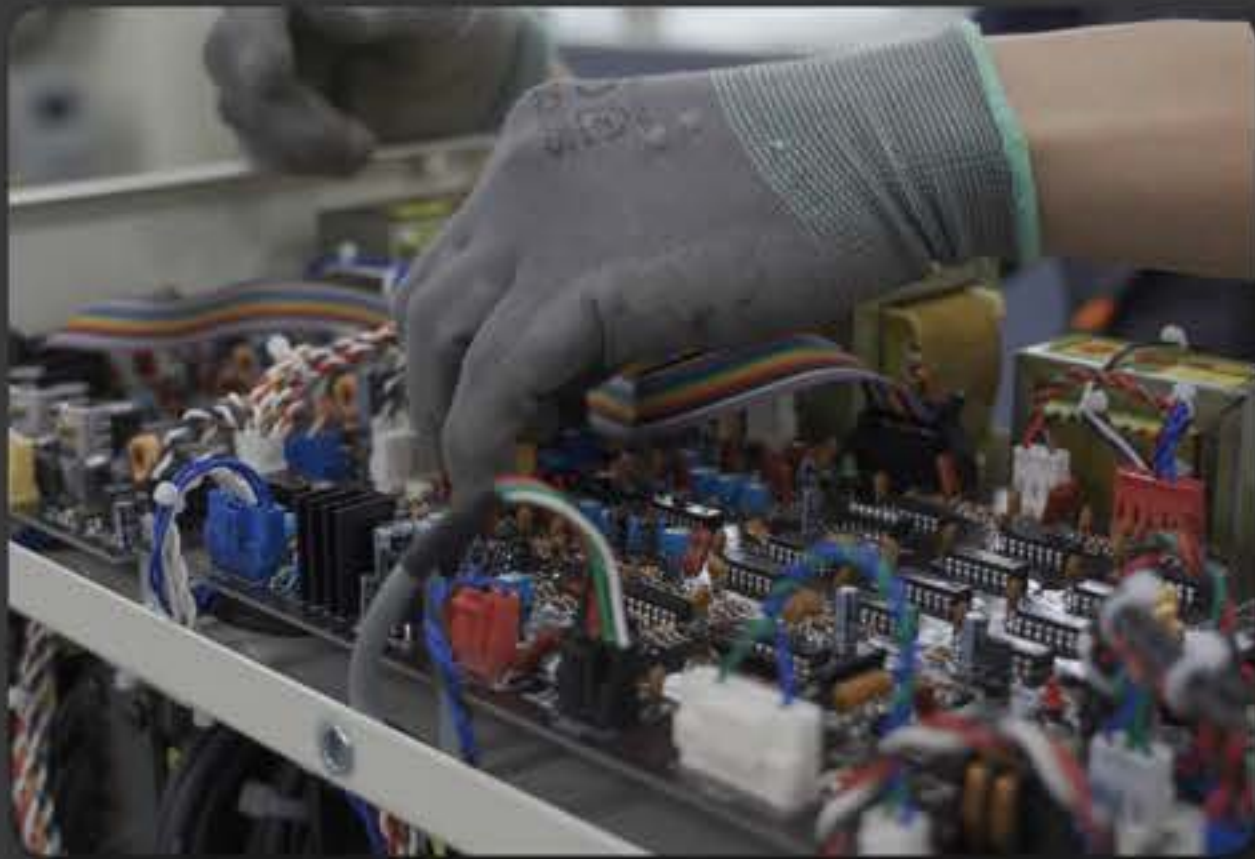
DC Tig

- Inverter 2 team production line



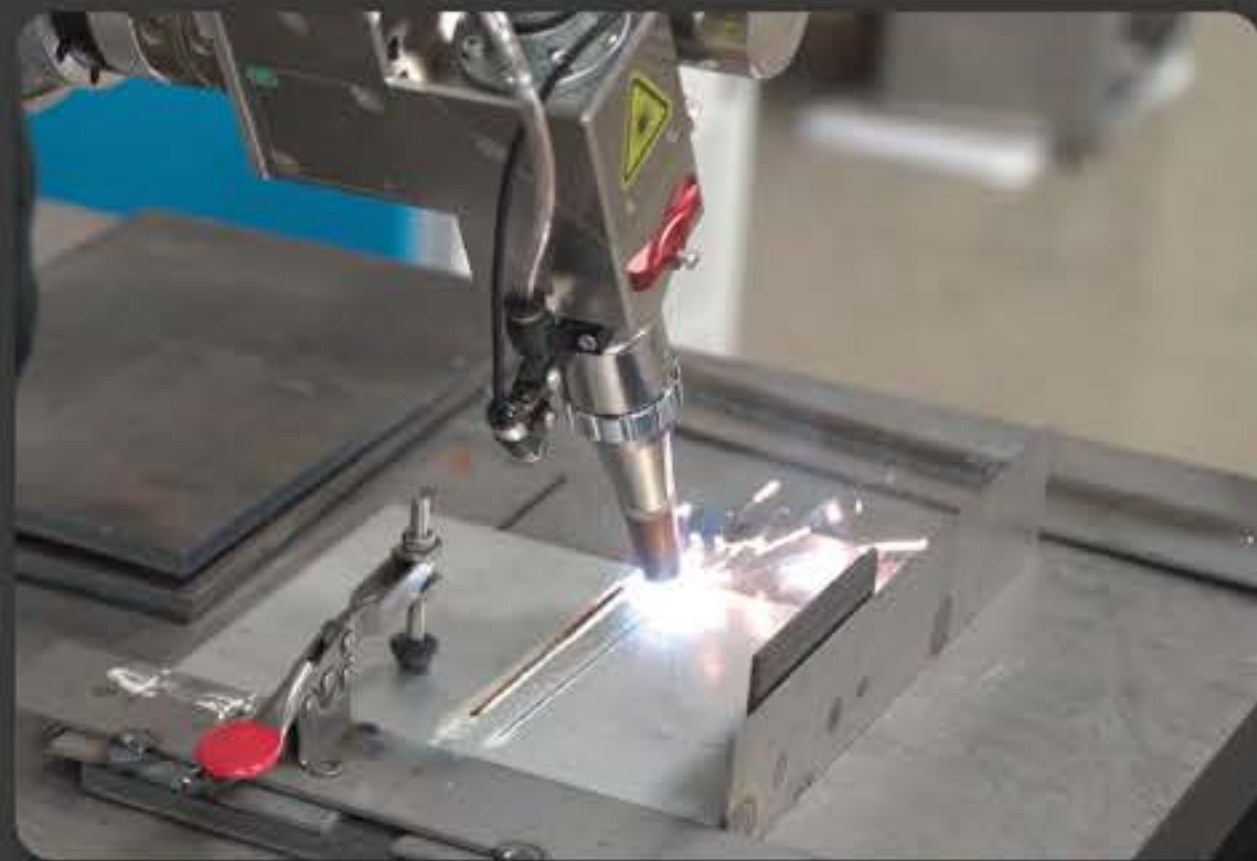
CO₂
Plasma

- Inverter 3 team production line



Cooler
Chiller
PSU

- Welding robot production line



Welding robot
Laser welding system

- Laser welding system



Laser
welding
machine

- Automation welding system



Automation
welding
machine

Thank you

